

# FOR SUBLEASE



**1782-32<sup>nd</sup> Street SW | Medicine Hat, AB**  
11,262 - 25,147 square feet on 2.47 acres



**JON C. MOOK, sior**  
PRESIDENT, MANAGING DIRECTOR  
C: 403-616-5239  
[jmook@lee-associates.com](mailto:jmook@lee-associates.com)

**ELIAS TSOUGRAINIS**  
SALES & LEASING ASSOCIATE  
C: 403-680-4875  
[etsougrainis@lee-associates.com](mailto:etsougrainis@lee-associates.com)



# PROPERTY DETAILS

## TOTAL BUILDING:

Old Shop: 11,262 sq. ft.

New Shop: 13,885 sq. ft.

Total: 25,147 sq. ft.

## SITE SIZE:

2.47 acres

## NET SUBLEASE RATE:

Market

## OPERATING COSTS:

\$2.67 per sq. ft. per annum (for 2025)  
(property taxes only)

## AVAILABLE:

Immediate

## TERM:

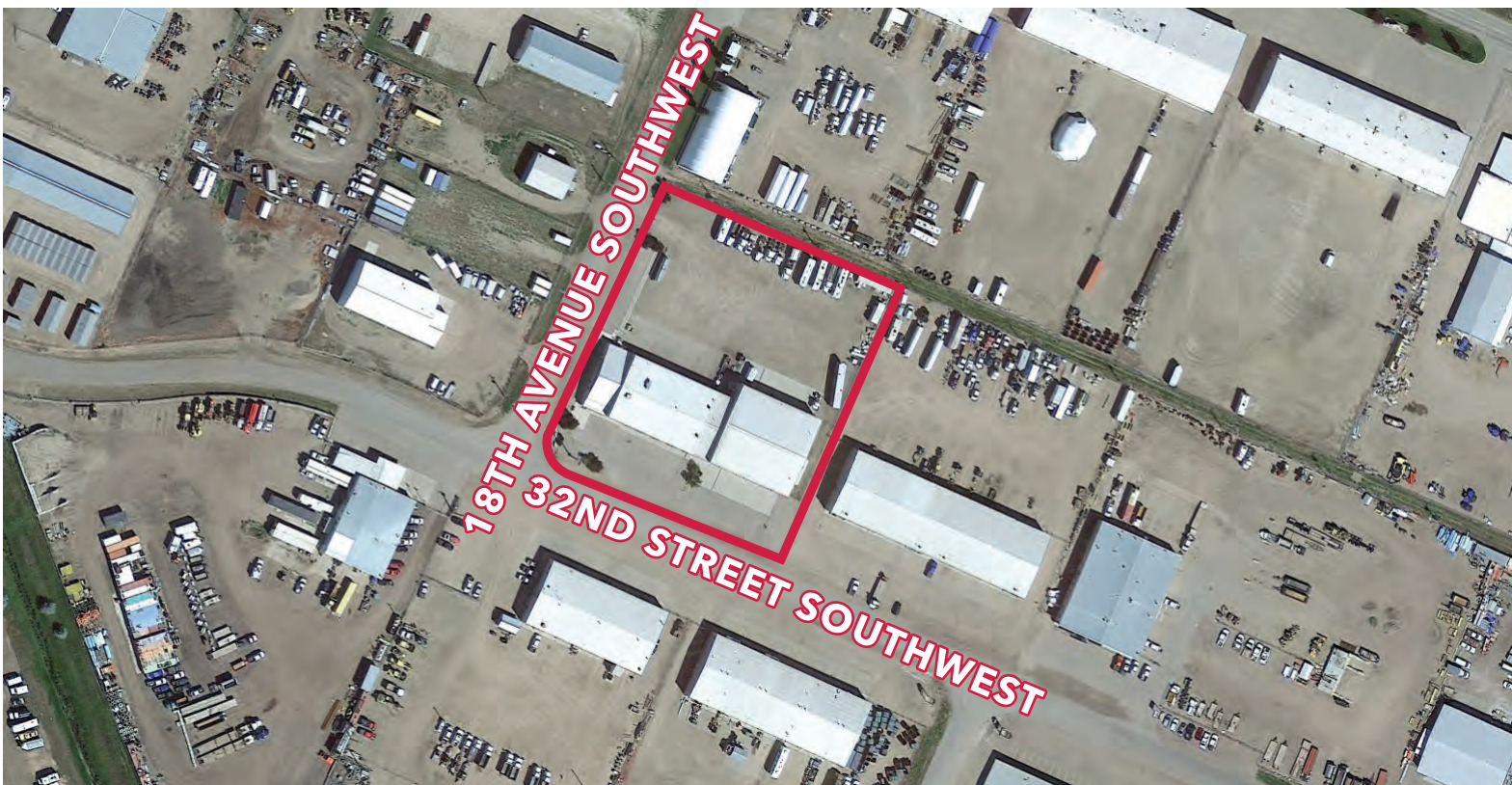
September 30th, 2030

## LIGHTING:

LED

## COMMENTS:

- » Turn-key demising renovations underway
- » Single-use or two-tenant facility
- » Both shops include a MUA system
- » Air compressor & airlines throughout
- » Large fenced, gravel yard
- » Corner location on 32<sup>nd</sup> Street SW







OFFICE/SHOWROOM



OLD SHOP



PARTS/RECEIVING



SECOND FLOOR OFFICE



NEW SHOP



OVERHEAD CRANE

## OLD SHOP

### AVAILABLE AREA:

Office/Showroom	2,860 sq. ft.
Parts/Receiving:	2,449 sq. ft.
<u>Shop:</u>	<u>5,953 sq. ft.</u>
Total:	11,262 sq. ft.

### CEILING HEIGHT:

16'6" clear

### POWER:

200 amps, 600 volts, 3 phase with step down transformer to 120/208 volts

### LOADING:

8 - 14' X 16' drive-in doors (4 drive-thru doors)

### COMMENTS:

» 2 trench drains with sumps

## NEW SHOP

### AVAILABLE AREA:

Main Floor Office/Parts:	1,608 sq. ft.
Second Floor Office:	1,718 sq. ft.
<u>Shop:</u>	<u>10,559 sq. ft.</u>
Total:	13,885 sq. ft.

### CEILING HEIGHT:

21'6" clear

### CRANE:

5 TON overhead bridge

### HOOK HEIGHT:

16' clear

### POWER:

125 amps, 600 volts, 3 phase with step down transformer to 120/208 volts

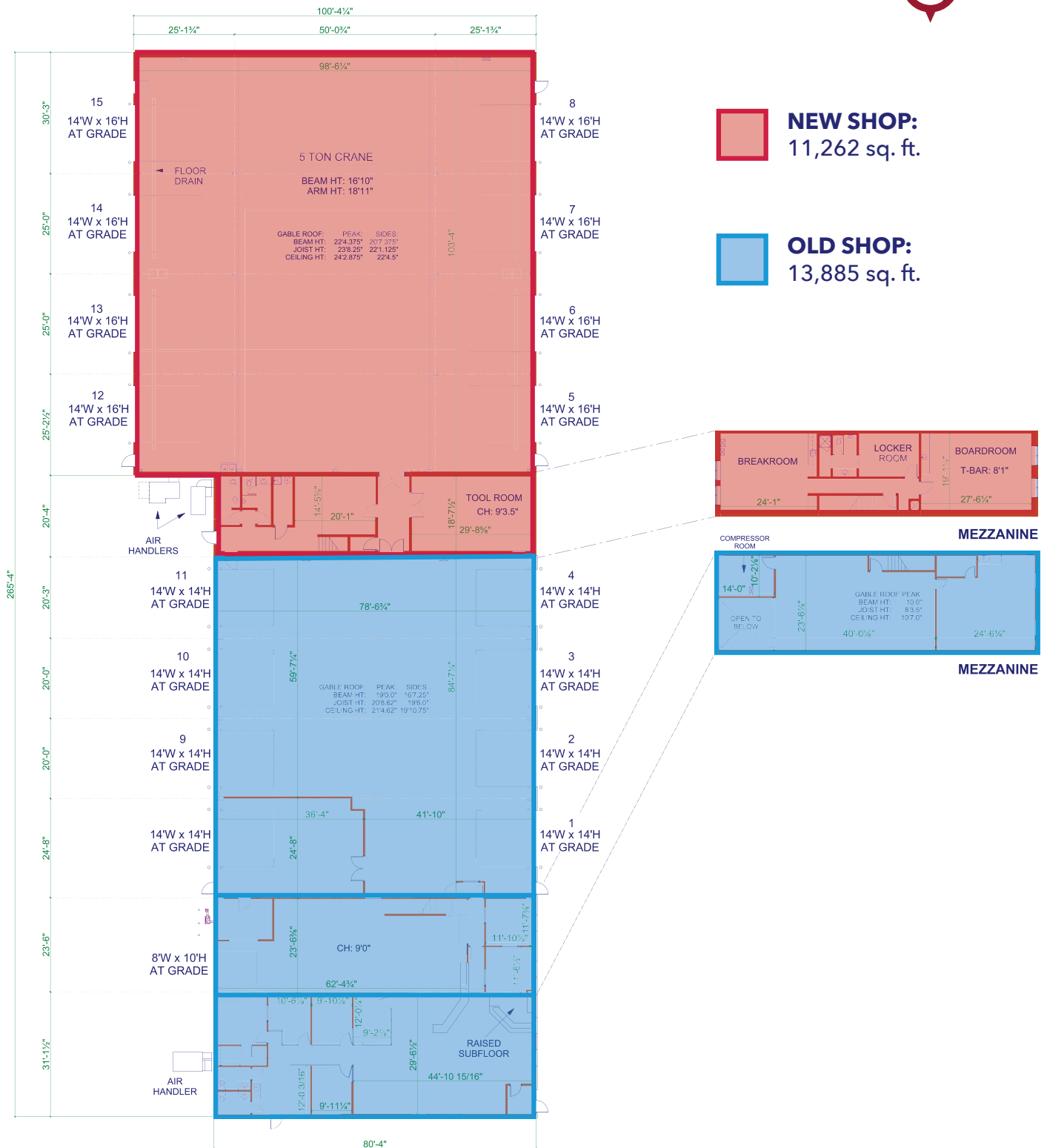
### LOADING:

8 - 14' X 14' drive-in doors (4 drive-thru doors)  
1 - 8' X 10' drive-in door

### COMMENTS:

» Multiple sumps

# SITE PLAN





# LOCATION



## CONTACT US

**JON C. MOOK, SIOR**  
PRESIDENT, MANAGING DIRECTOR  
C: 403-616-5239  
jmook@lee-associates.com

**ELIAS TSOUGRAINIS**  
SALES & LEASING ASSOCIATE  
C: 403-680-4875  
etsougrainis@lee-associates.com

This brochure is for INFORMATION PURPOSES ONLY. There are no representations or warranties provided with respect to the information contained herein. Any prospective purchaser should take whatever steps they deem necessary or advisable to verify the accuracy or completeness of any information contained herein before relying on any such information. Prospective purchasers are cautioned to conduct their own due diligence.

117, 4950 - 106th Avenue SE | Calgary, AB T2C 5E9  
lee-associates.com/calgary

**LEE & ASSOCIATES**  
COMMERCIAL REAL ESTATE SERVICES